



**ENGIRO**  
HYDAC INTERNATIONAL

# Electric Drive Systems for Municipal Vehicles





# The Perfect Combination for Every Weight Class



Thanks to the modular design of all ENGIRO motors and components, it is possible to offer the optimum electric drive system for all types of municipal vehicles, consisting of a motor or generator, a matching inverter, and a suitable cable harness. In this brochure, we have put together a selection of electric traction or hydraulic motor sets for every mobile application in urban fleets. Whether you are looking for an efficient system for small vehicles or a reliable power source for heavy models – with a variable continuous power range from 5 kW to powerful 400 kW, ENGIRO ensures that all municipal vehicles get the drive solution they need to work productively and efficiently.



159AH



159WH



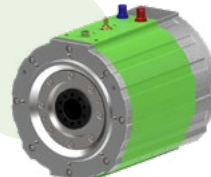
196A



205A



205W



260W



370W



# Sweepers



## Traction Motor

### 159AH\_06020

Motor  
 Controller DMC Size 3 96 V  
 AC Cables integrated  
 Data Cables Wiring harness

### Art.-No.

4844589  
 4842856  
 4842765



Air Cooled



9/27



4380/7200



20/70



96

### 205W\_16023

Motor  
 Controller 400 V 3-phase motor controller  
 240 A / 450 A  
 AC Cables 3 x 50 mm<sup>2</sup>, 2 m  
 Data Cables Resolver + Temp. data cable

4872455  
 4844592  
 4801180  
 4842835



Water Cooled



74/115



3760/8000



188/358



400

### 205W\_08052

Motor  
 Controller 800 V 3-phase motor controller  
 200 A / 300 A  
 AC Cables 3 x 25 mm<sup>2</sup>, 2 m  
 Data Cables Resolver + Temp. data cable

4872310  
 4844592  
 4842711  
 4842835



Water Cooled



58/79



7500/8000



74/194



800

### 260W\_15031

Motor  
 Controller 800 V 3-phase motor controller  
 200 A / 300 A  
 AC Cables 3 x 35 mm<sup>2</sup>, 2 m  
 Data Cables Resolver + Temp. data cable

4807369  
 4844592  
 4692046  
 4801179



Water Cooled



113/154



2440/6000



444/807



800



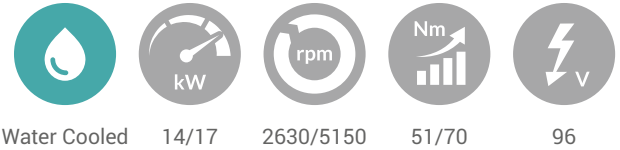
# Sweepers



## Hydraulic Motor

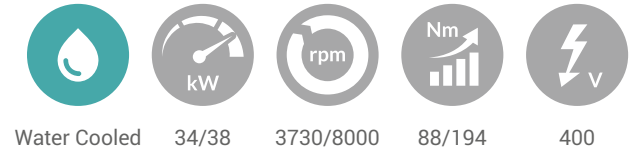
### 159WH\_07026

Motor		4663926
Controller	DMC Size 2 96 V + Cooling plate	4867729
AC Cables	3 x 50 mm <sup>2</sup>	6322535
Data Cables	Wiring harness	4843289



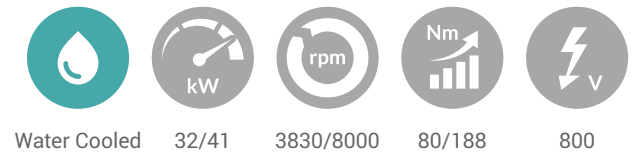
### 205W\_08052

Motor		4872294
Controller	800 V 3-phase motor controller 200 A / 300 A	4844592
AC Cables	3 x 25 mm <sup>2</sup> , 2 m	4842711
Data Cables	Resolver + Temp. data cable	4842835



### 205W\_08095

Motor		4872351
Controller	800 V 3-phase motor controller 200 A / 300 A	4844592
AC Cables	3 x 25 mm <sup>2</sup> , 2 m	4842711
Data Cables	Resolver + Temp. data cable	4842835



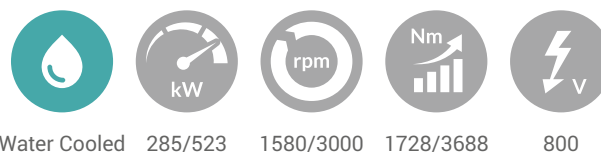
# Refuse Collection Vehicles



## Traction Motor

### 370W\_29016

		Art.-No.
Motor		4801924
Controller	800 V 3-phase motor controller 600 A / 900 A	4843401
AC Cables	3 x 120 mm <sup>2</sup> , 2 m	4843095
Data Cables	Wiring harness	4842840



## Hydraulic Motor

### 205W\_08095

		Art.-No
Motor		4872351
Controller	800 V 3-phase motor controller 200 A / 300 A	4844592
AC Cables	3 x 25 mm <sup>2</sup> , 2 m	4842711
Data Cables	Resolver + Temp. data cable	4842835



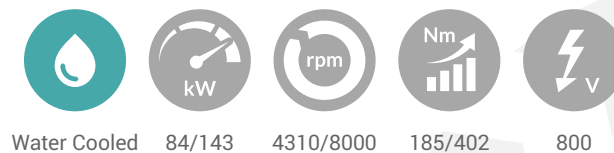
### 205W\_04191

Motor		4872207
Controller	800 V 3-phase motor controller 200 A / 300 A	4844592
AC Cables	3 x 25 mm <sup>2</sup> , 2 m	4842711
Data Cables	Resolver + Temp. data cable	4842835



### 205W\_16042

Motor		4872468
Controller	800 V 3-phase motor controller 200 A / 300 A	4844592
AC Cables	3 x 25 mm <sup>2</sup> , 2 m	4842711
Data Cables	Resolver + Temp. data cable	4842835





# Multifunctional Vehicles

## Traction Motor

### 159AH\_06020

		Art.-No.
Motor		4844589
Controller	DMC Size 3 96 V	4842856
AC Cables	integrated	
Data Cables	Wiring harness	4842765



Air Cooled



9/27



4380/7200



20/70



96

### 260W\_20020

		Art.-No.
Motor		4807371
Controller	800 V 3-phase motor controller 200 A / 300 A	4844592
AC Cables	3 x 35 mm <sup>2</sup> , 2 m	4692046
Data Cables	Resolver + Temp. data cable	4801179



Water Cooled



126/200



2480/6000



485/795



800

## Hydraulic Motor

### 205A\_08011

		Art.-No.
Motor		4706287
Controller	DMC Size 3 48 V	4844659
AC Cables	integrated	
Data Cables	Wiring harness	4637605



Air Cooled



13/21



2000/6010



60/127



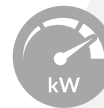
48

### 205W\_08095

		Art.-No.
Motor		4872351
Controller	800 V 3-phase motor controller 200 A / 300 A	4844592
AC Cables	3 x 25 mm <sup>2</sup> , 2 m	4842711
Data Cables	Resolver + Temp. data cable	4842835



Water Cooled



32/41



3830/8000



80/188



800

The values given above for the electric motors always refer to the continuous operating range and the maximum operating range.

# Optimised Drive Systems for a Wide Range of Mobile Applications



If the electric drive systems listed do not meet your requirements or if you need motors or generators for another municipal vehicle, please contact us, so we will create an individual set combination for you. This will ensure that you receive a solution that utilises the full potential of your vehicle.

Are you looking for a set consisting of an electric motor, inverter, and associated cables for other commercial vehicles? ENGIRO supplies optimised electric drive systems for a wide range of mobile applications.

Contact the ENGIRO Sales Team for more information:  
[sales@engiro.de](mailto:sales@engiro.de)



To be noted: The information in this brochure is based on our current knowledge and experience. Due to the wide range of possible influences during application, they do not exempt the processor and user from carrying out their own tests and trials. Although the suitability for a specific application can be estimated from our information, a legally binding assurance is by no means possible. Depending on the individual case, we recommend consultation with us. Any industrial property rights and applicable laws must be observed by the recipient of our products on his own responsibility.

**ENGIRO**  
HYDAC INTERNATIONAL

## About ENGIRO

ENGIRO GmbH represents the drive division within the renowned HYDAC group of companies, which specialises in hydraulics, storage, filter technology, control systems and thermal management. As one of the leading system providers and a pioneer of highly efficient electric drives for commercial vehicles with over 15 years of experience, ENGIRO offers its customers around the world innovative electric motors and generators, matched to inverters and matching wiring harnesses. With the scalable and modular components, ENGIRO customers benefit from an electric drive system that is optimally tailored to customer-specific requirements. Thanks to the extensive expertise and cooperative service, the experts from ENGIRO are available to their customers so they can find the best possible solution together. ENGIRO customers can count on getting a custom drive solution that efficiently and reliably electrifies their vehicles – whether municipal vehicles, construction and agricultural machinery, buses and lorries, boats or special vehicles.

Headquartered in the high-tech region of Aachen, the company has established its product portfolio worldwide. ENGIRO is investing in expanding its business and production facilities to grow for its customers in the long term. Thanks to the first-class developer expertise, the company is continuously further developing its portfolio and developing new products in the field of electric drive systems. With a clear focus on sustainability, efficiency and customer-centred solutions, ENGIRO has set itself the goal of providing long-term concepts for demanding environmental requirements of the future.

